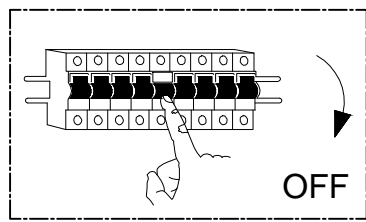
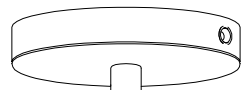


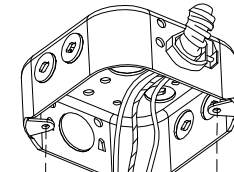
# 8201PL-01TN-US



①



Junction box

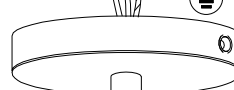


③

④

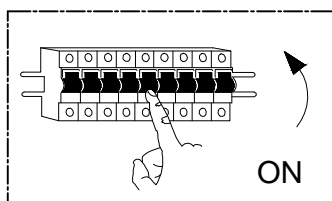


⑤

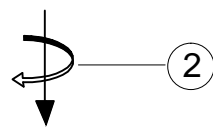


1\*E26

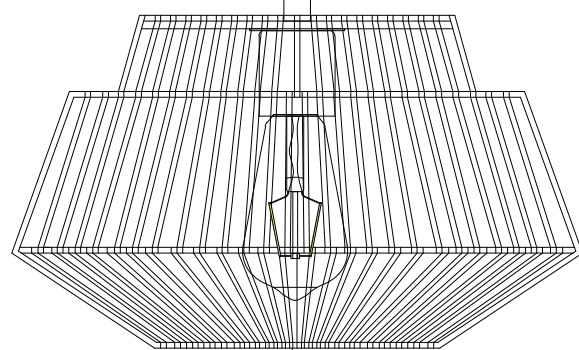
1\*E26



⑦



②



⑥

- 1 : Please turn off the power first.
- 2 : Connect the power cord and tighten the terminal.
- 3 : Screw the hanging board to the junction box.
- 4 : The screws on both sides of the STB are fixed on the hanging board.
- 5 : Screw the balance lever into the lamp body.
- 6 : Install the light bulb(E26 socket).
- 7 : Please turn On the power.