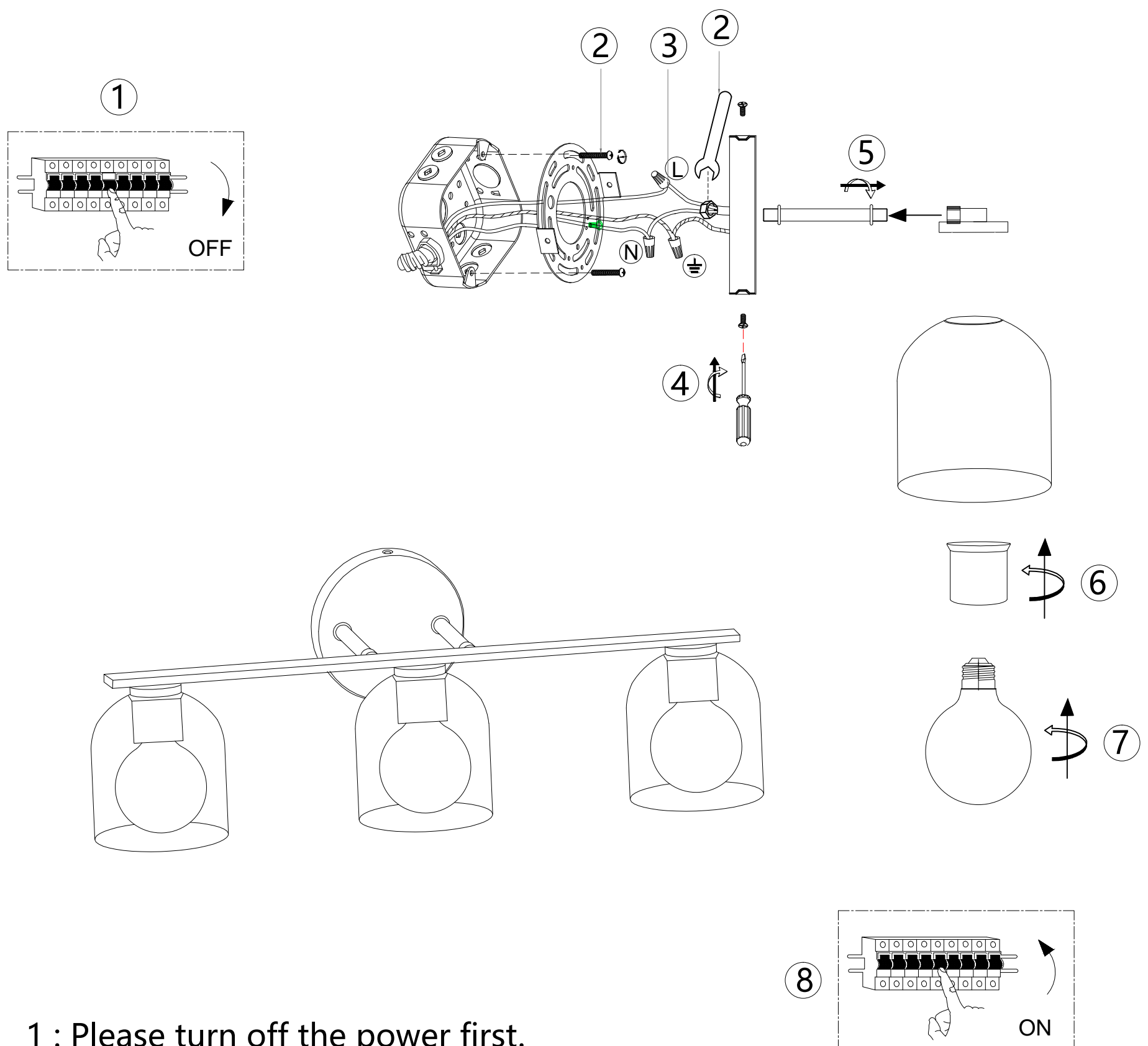


# 8202WL-03-US



1 : Please turn off the power first.

2: Attach the mounting bracket to the electrical junction box on the wall using the fixing screw supplied.

3 : Screw the hanging board to the junction box.

4 : Connect all the wiring L/N/G as diagram shows using plastic connector supplied.

5 : Stick the ceiling on the mounting bracket Use the mounting screws provided with the fittings to tighten

6 : Rotate and fix the glass lamp shade on the lamp base as shown in the figure.

7: Install the light bulb (E26 socket).

8: Please turn on the power